

Jamie Gibbs and Associates
Interior Designers and Landscape Architects
122 East 82nd Street
New York, New York, 10028
212-717-6590
jamie@jamiiegibbsassociates.com
www.jamiiegibbsassociates.com

The Anniversary Show House Features a Gallery Hallway Designed by Jamie Gibbs and Associates

Montclair, NJ: April 29- May 30, 2006: Jamie Gibbs and Associates has been invited to design the Gallery Hallway for the 2006 Anniversary Designer Show House in Montclair, NJ sponsored by the Junior League of Montclair-Newark. It will be the fourth consecutive show house done by Mr. Gibbs with this Junior League chapter.

Located at 4 Stonebridge Road, the majestic mansion is located on four landscaped acres and is receiving a major renovation from a new kitchen wing to updated architectural detail and fabulous rooms decorated by 26 of the East's top interior designers. The feast for interior design will be open to the public daily from 10 to 5, with the last ticket sold at 4:30. On Thursdays the show house will remain open until 8 PM.

The ten-foot by thirty-five foot hallway is mahogany paneled with a dark hardwood running-board floor and an arched plaster ceiling. Interesting details include a decorative plaster frieze encircling the arched ceiling, leaded glass windows, stacked mahogany crown moldings (creating a cove) and a pair of window niches, also lined in mahogany paneling. This c.1909 gallery has remained little changed. Jamie Gibbs and Associates will be highlighting the rich, detailed architecture of the hall and adding decorative elements that take a classic and pop it into the 21st century.

A custom field and border carpet, from Stark, will mimic the outline of the plaster frieze moldings on the ceiling, directly above. The arched ceiling will be painted with a whimsical mural by Classic Décor to add illusionary height and openness to the hall. Accentuating the undulating paneled walls, we will place antique furnishings to emphasize the setbacks and highlight the niches.

The window treatments will be exceptional. Starting with the two 32" depth window niches, we will take advantage of the deep recesses. A custom silk embroidery drapery panel will be top-mounted to the window niche opening. Its companion silk and linen drapery panel will be mounted to the wall framing out the large leaded glass window in each niche. Between the two panels will be an antique English console from Agostino Antiques (NYC), accessorized with treasures from bronze figures to antique wooden boxes and other art from around the world. The drapery panels are silk taffeta with over-embroidery and silk-linen faille, all from Plumridge Silks. Over-scaled Jamie Gibbs Vintage Collection tassel tiebacks and trim from D'Kei. Inc. will accentuate the drapery

panels and slipcovers. All soft treatments will be created and installed by Royal Windows.

Original ceiling fixtures and wall sconces will be temporarily replaced with new custom-made units by The Lampworks and designed by Jamie Gibbs. Lighting in this long, dark hallway will be very theatrical. Custom domed uplights will wash the ceiling, accentuating the decorative painting. The sconces will be replaced with units that compliment the drapery treatments and function as wall art. Recessed lighting will be installed above the cove moulding of the mahogany paneling. This will wash the edges of the ceiling and give a warm glow to the paneling.

Breaking up the run of formal raised-panel mahogany lining the walls will be a pair of Georgian Gilt mirrors and artwork in gilt frames. This original art will accentuate the upbeat style of the furnishings and add excitement to the space. Again, to accentuate the undulating paneling, a fabulous antique sideboard from Agostino Antiques will rest against the west wall and be flanked by a pair of Georgian Ganesborough chairs with fun silk slipcovers.

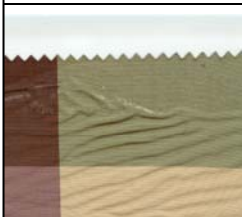
The furnishings will be sparse, but elegant. Each item, large and small, has been selected for its art quality and impact on the space. Functionality also comes into play, this is an entrance hall, and thus accommodations have been made for seating, storage, reception and primping!

Elements:

- ❑ Old-world architectural elegance
- ❑ Custom carpeting and artistic painting
- ❑ A mix of antique and new furnishings with an edge
- ❑ Opulent Plumridge silk and silk/linen textiles and Vintage Collection trims
- ❑ Signature collection trims and accessories

Suppliers:

- ❑ Plumridge Silks (fabrics)
- ❑ D'Kei, Inc. (trims)
- ❑ The Lampworks (light fixtures)
- ❑ Agostino (antique furnishings)
- ❑ Jamie Gibbs and Associates (accessories and artwork)
- ❑ Galaxy Designs (custom silk embroidery)
- ❑ Forest Group (drapery hardware)
- ❑ Benjamin Moore (paint)
- ❑ Howard Miller Clocks
- ❑ Stark (custom carpet)
- ❑ Royal Windows (soft treatment fabrication)
- ❑ Classic Décor (decorative painting)



Elements of the design for the Gallery Hall by Jamie Gibbs and Associates at the 2006 Anniversary Designer Show House.